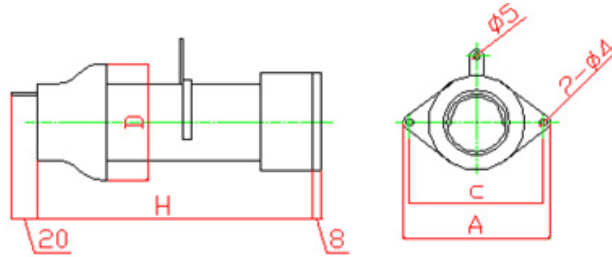




深圳市亿普电子有限公司
SHENZHEN TOPMAY ELECTRONIC CO., LTD.

CCG11-1 bottle shaped High Power Ceramic Capacitor



Model	Nominal power capacity	Rated voltage(KV)		Reactive power (KVA)	Current Maximum (A)	Dimension(mm)				Temperature coefficient (PPM/°C)
	(PF)	DC	HF(RMS)			D	H	L	C	
CCG11-1	680	10	8	30	15	65	80	80	68	-750
	1000						90			
	1500						93			
CCG11-2	470	10	8	20	10	45	70	62	50	
	680						78			
	1000						90			
	1500						95			

High power ceramic capacitor technical parameters:

1. Typical dissipation factor: ≤ 0.0008 ;
2. Volume resistivity: $\geq 100000\text{M}\Omega$;
3. Permissible variation of rated capacitance: K (+/-10%) ;
4. Temperature range: -40/+85/04;
5. Rated temperature: +85°C ;
6. Maximum relative humidity: 75%;
7. Test voltage: 2 times of rated voltage if the rated voltage $\leq 15\text{KV}$ or 1.5 times of rated voltage if the rated voltage $> 15\text{KV}$.